

# FORD RANGER CHERRY PICKER

**5** YEAR  
100,000  
KILOMETRE  
WARRANTY



Telescopic boom with extension and swivelling realised.



Emergency Start/Stop and control at rear tray



Emergency Start/Stop and control at basket



Front and rear outriggers  
Chassis leveling capability



Suspension Upgrade 3.5T

\* Some features shown are optional



**NiUFORD**

For more information contact: [fleetsales@pngmotors.com.pg](mailto:fleetsales@pngmotors.com.pg) | [fordpng.com](http://fordpng.com)

# FORD RANGER

## CHERRY PICKER

### Vehicle Details

Manufacturer	Ford
Model	Ranger Standard Cab
Engine	2.0L Diesel Turbo
Power (kW/PS)	125/170 @ 3500 rpm
Torque (Nm)	405 @ 1750 - 2500 rpm
Drivetrain	4X4
Transmission	6-speed manual
Fuel tank capacity	80L
Wheels	16" Alloy Wheel
Tires	255/70 R16

### Base Vehicle Dimensions (mm)

Length	5370
Width (with mirror)	1910
Height	1884
Wheelbase	3270
Ground clearance	230
Water wading	800

### Base Vehicle Weight Table (kg)

Kerb weight	1818
GVW	3160
Payload	1342

### Standard Features

Aerial platform with steel tray	Key Performance
Aerial Platform (electro-Hydraulic system)	Working Height 13.2 meter
Suspension Upgrade 3.5T	Basket Height (Bottom) 11.2 meter
Fire Extinguisher 1kg	Vehicle Available Payload 400kg (approx.)
First Aid Kit Level 1 - DIN13164	Insulate basket Payload 225kg
Warning Triangle	Basket Insulation 1000V
	Outreach 6.55 meter
	Able to withstand winds up to 12.5 m/s

### Safety devices

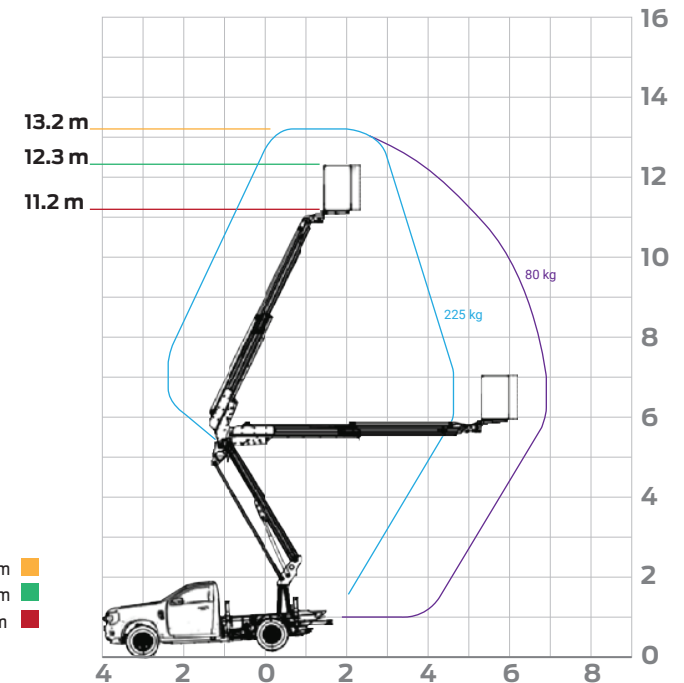
Chassis levelling sensor
Emergency buttons in case of emergency
Hand pump for emergency rescue
Manual control for emergency rescue
Flanged holding valves on cylinders
Cross control movement limiting device
Outtrigger/boom interlock
Safety belts attachments in the basket
Manual basket levelling
Basket Load Limiting Device

### Optional Features

Advance Fuel Filtration with water separation and clear monitoring bolw
Vehicle painting

\*Working height (avg. worker reach = 2m)  
 \*Basket height (top)  
 \*Basket height (bottom)  
 \*measure from ground.

13.2 m  
 12.3 m  
 11.2 m



#### Notes:

The company reserves the right to change the vehicle specifications and features described in this publication at any time. Vehicle specifications and features may vary in different markets. Images are for illustrative purposes only and may appear different from the actual vehicle.



For more information contact: [fleetsales@pngmotors.com.pg](mailto:fleetsales@pngmotors.com.pg) | [fordpng.com](http://fordpng.com)